

Trawlspeed Sensor

HC4-TSS

TECHNICAL SPECIFICATIONS

Transmission

Frequency range: 38.9 – 43.4 kHz
 Source level: 190 dB // 1uPa @ 1m
 Beam width: 55 deg (-3dB)
 Range to vessel: Approx. 2500 m (Note 1)

Operation

Update rate along: Approx. 25 sec
 Update rate across: Approx. 25 sec
 Average transmission: Approx. 12.5 sec
 Max. Depth: 1200 m

Battery

Type: NiCd, 2x12 V / 600 mAh
 Charging time: 1.5 hour (QBC-05)
 Operation time: Approx. 30 hrs

Measurement

Along trawl path: 0 to 6 knots
 Across trawl path: 0 to +/- 3 knots
 Accuracy: ± 10% of value
 (Min: ± 0.1 knots)

Weight

In air: 8.5 kg
 In water: 2.3 kg

Main dimensions

Length: 278 mm
 Width: 255 mm
 Height: 105 mm

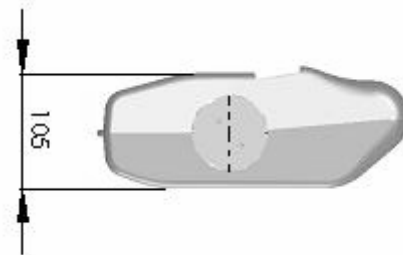
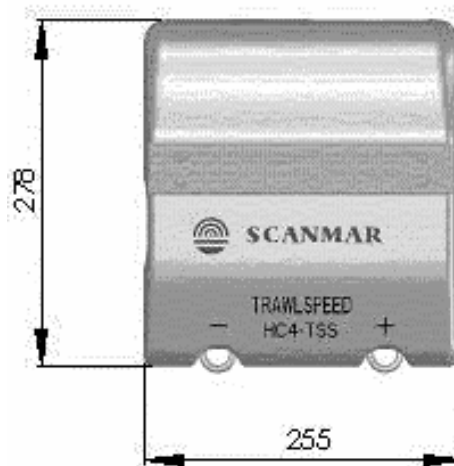
Available accessories & spare parts

Mounting kit 104742
 Battery packs 105485 (2 pcs)
 Battery charger QBC-05

Approvals



Note 1: Depends on acoustic conditions, ships noise, mounting and alignment of sensors and hydrophone.



Revision no: 1.0	Product name: HC4-TSS	Document no. 105768
Revision date: 09.10.2003	Product part no: 104952	

Note: All specifications are subject to change without prior notice