



MIES VALUE ADDED SERVICES

—THERMOGRAPHY—

In 2009 MIES have invested some capital into acquiring state of the art test equipment. This included state of the art FLIR infrared cameras. We can now offer our clients a value added service in respect of infrared surveys of your electrical installations, buildings, refrigeration installations to name a few. It is imperative these days to determine where energy loss occurs or potential risk is involved. We deliver a complete survey with a comprehensive report and infrared images, recommendations for preventative measures and repairs.

Find below a typical sample report and some infrared images.

For any further information regarding this value added service please contact our office on +27 21 5118499.

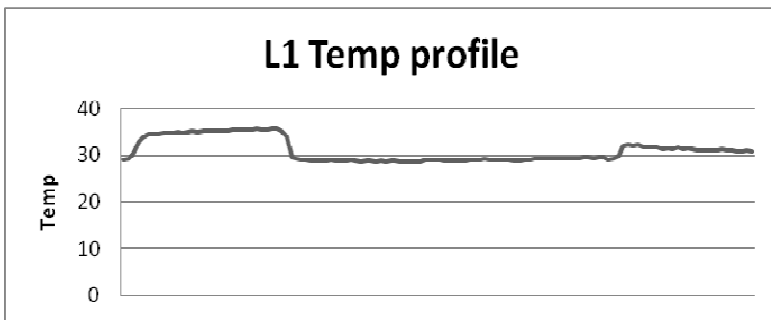
Chris Bosch

Member: Technical Operations
Marine Industrial Electro Solutions
South Africa
Mobile: +27 (0) 82 3363769
Fax: +27 (0) 880 215118499
Office: +27(0) 21 5118499
E-Mail: chris@mies.co.za
Web: www.mies.co.za

Description- location SAMPLE

Incident Summary	
Location	Engine Room
Detail	Main Bussbar
Equipment	Incommer 08
Incident Date	12/12/2009 2:53:06 PM
Diagnosis	Poor ventilation inside main switchboard
Recommendation	Install fans to correct ventilation inside MSB
Severity	1. High
Units	°C
Global Emissivity	1.00

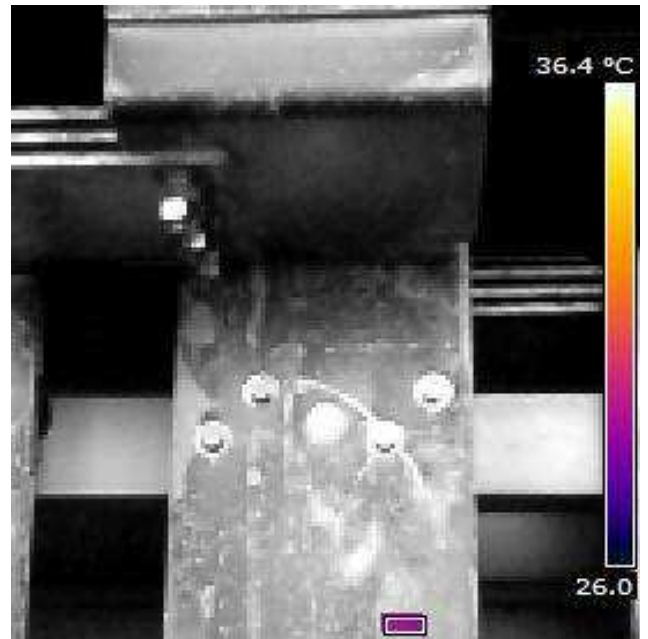
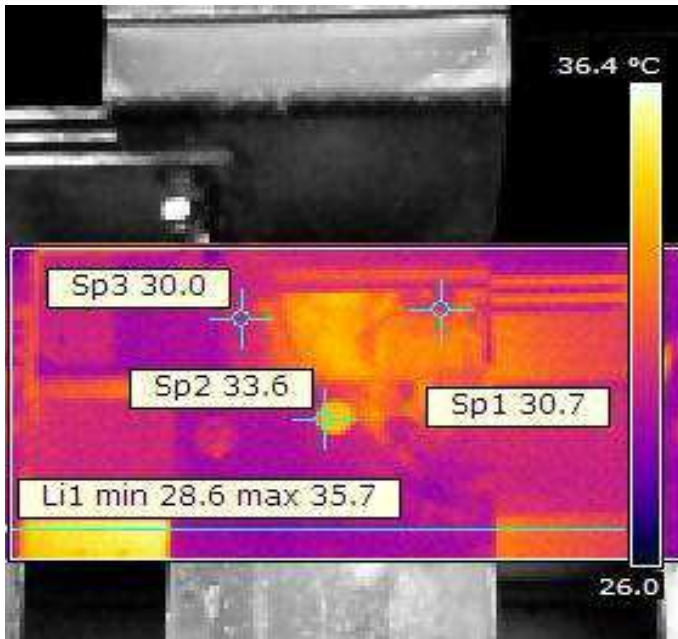
Inspection Detail	
Emissivity	0.95
Reflected temperature	20
Atmospheric temperature	20
Relative humidity	0.5
Distance	1



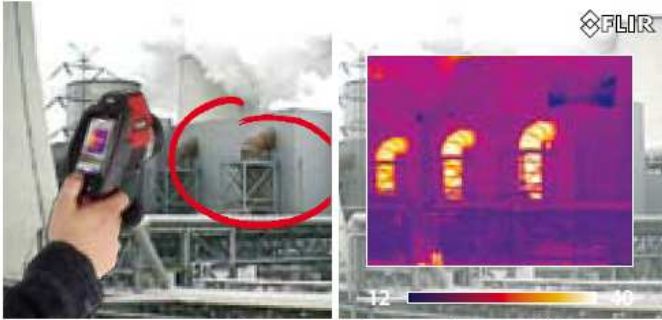
Spot Meter	Emissivity	Temp*
SP1	1.00	30.7
SP2	1.00	33.6
SP3	1.00	30.0
Li1	1.00	32

Comments

Urgent attention required.

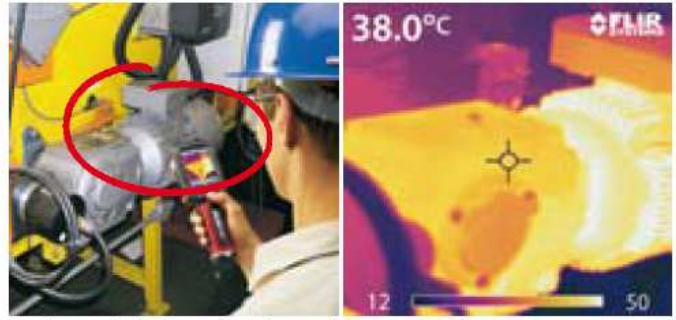


Perform safety inspections



Preventive inspection of exhaust pipes of a gas turbine installation.

Verify repairs



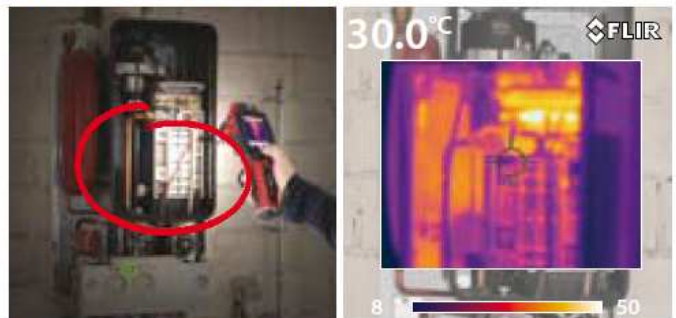
Mechanical check-up of an electrical motor using the FLIR i50.

Avoid unplanned shutdowns



Inspecting the transformer using the Fusion Picture-in-Picture function.

Evaluate new installations



Failure of a domestic gas boiler installation displayed using the PiP function. The FLIR i50 is the only IR camera in its class with built in illuminating lights ensuring quality visual images regardless of the on site conditions.

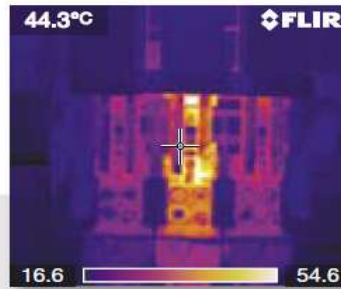
Avoid fires

Avoid unplanned shut-downs

Avoid unnecessary repairs

Verify repairs

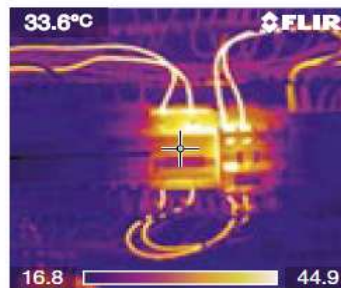
Evaluate new installations



The thermal image clearly shows an overheated connection which can not be spotted by the naked eye. An undetected failure in this connection can lead to a costly power outage.



Loose or badly connected cables start to overheat. If left unrepaired, heat can rise to a point where cables start to melt or, even worse, set the environment on fire.



Overheated electrical circuits are commonly detected with the help of a thermal imaging camera. Inspections can however be safely performed while systems are under load, without hindering production and without putting the inspector in harms way.



The thermal image clearly shows a defect or an overheated fuse. It can have very severe consequences. An entire production line can be shut down for several hours if this problem is not timely fixed.